

Centreville Road (Route 28) STARS Safety and Operational Improvements Study Online Survey Results Summary - Fall 2019



Welcome

WELCOME

Centreville Road / Route 28 Operational Improvements Study

This study is assessing potential operational improvements along two miles of Route 28 (Centreville Road) in Prince William County between the Fairfax County line and Blooms Quarry Lane.

[View Study Area Map](#) [Begin](#)

This stretch of Route 28 frequently has long backups and delays during weekday peak commute times, especially at traffic signals. Route 28 averages 54,000 vehicles per day within the study limits.

STARS
STRATEGICALLY TARGETED AND AFFORDABLE ROADWAY SOLUTIONS

2 PRIORITY RANKING

3 TRAVELER SURVEY

4 MAP MARKERS

5 WRAP UP

Centreville Road (Route 28) STARS Safety and Operational Improvements Study Online Survey Results Summary - Fall 2019



- Study area” Blooms Quarry Lane to Fairfax County line in Prince William County
- Online survey available from September 23 – October 7, 2019
- 647 total participants initiated survey
- 983 individual comments / feedback
- Survey respondent residences included Prince William County (53%), City of Manassas Park (22%), Fairfax County (8%) and other (17%)
- Most common home zip codes: 2011, 20110, 20112, and 20108
- Most common work zip codes: 20151, 20111, 20110, 20171, and 20170
- Most respondents traveled the corridor ‘Daily’ followed by a ‘A few times per week’
- ‘Work’ was the primary reason respondents traveled the corridor followed by ‘Passing through to a destination outside of the study area’ and ‘Home’
- ‘Travel time reliability’ was cited as the major issue along the corridor followed by vehicular traffic safety
- Congestion was noted as an issue in the morning and afternoon peaks in both travel directions
- ‘Sidewalks / crosswalks’ were the most requested multimodal need followed by ‘Transit / bus service’

647

**unique online
survey responses**

18,277

**total data
points**

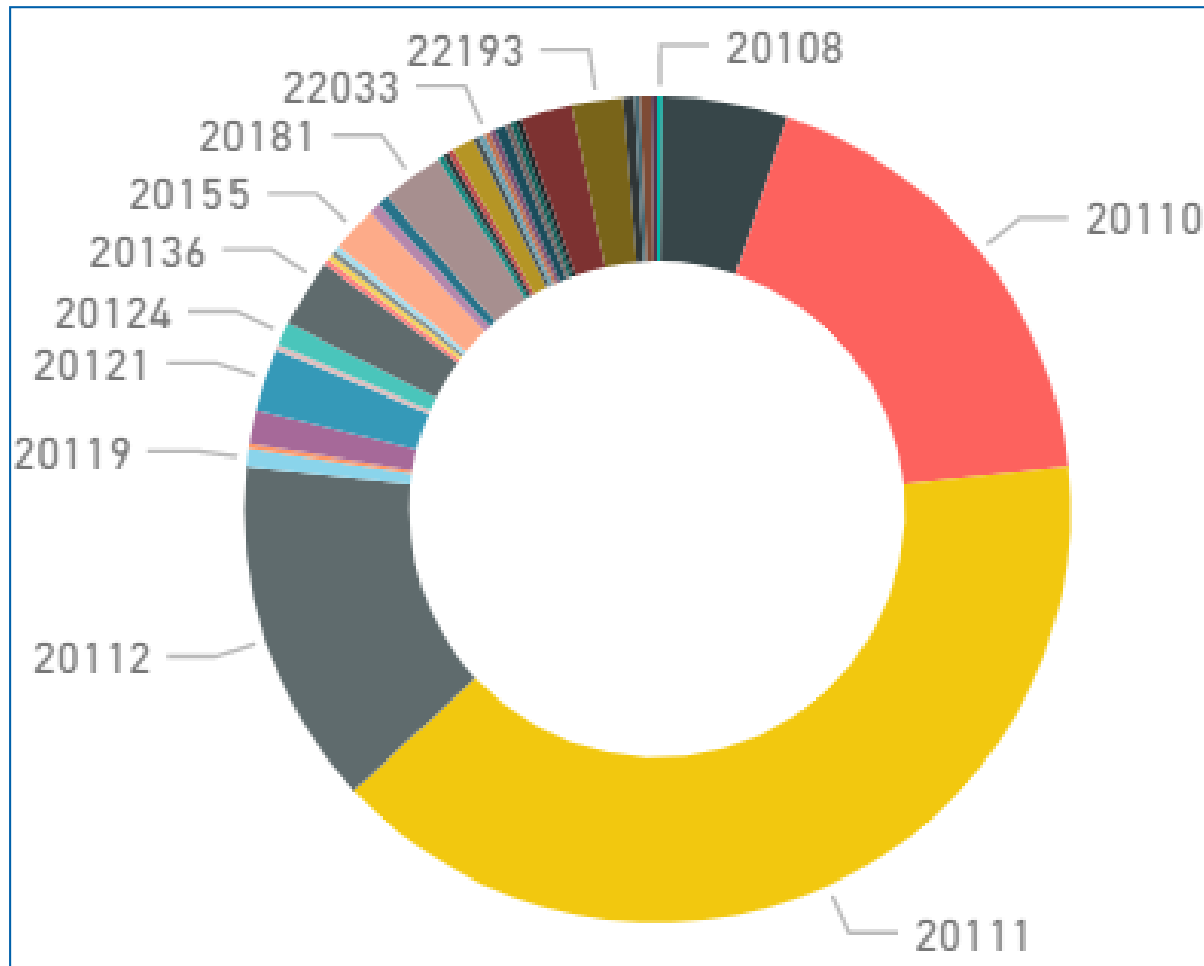
987

**total unique
comments**

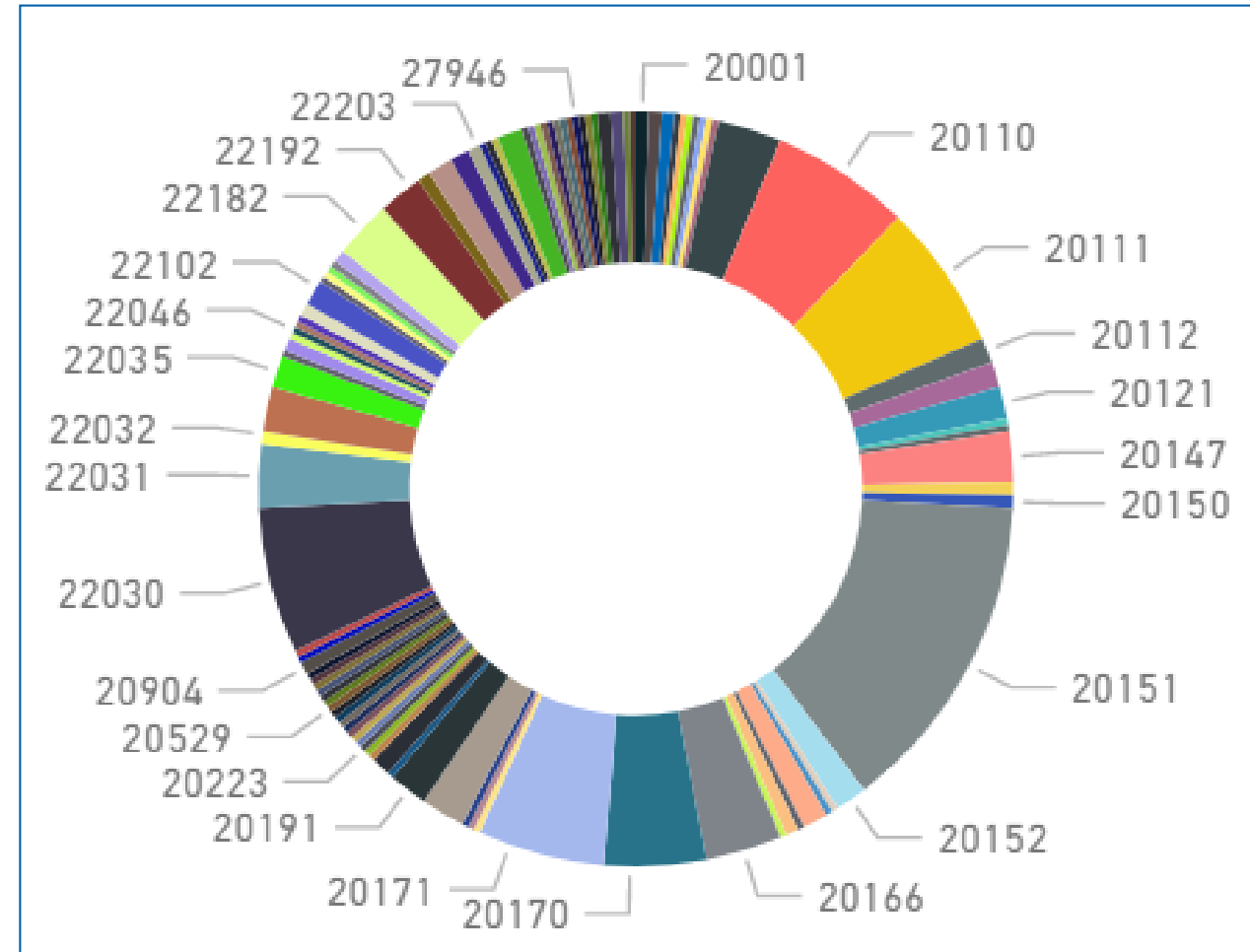
2,128

**map
markers**

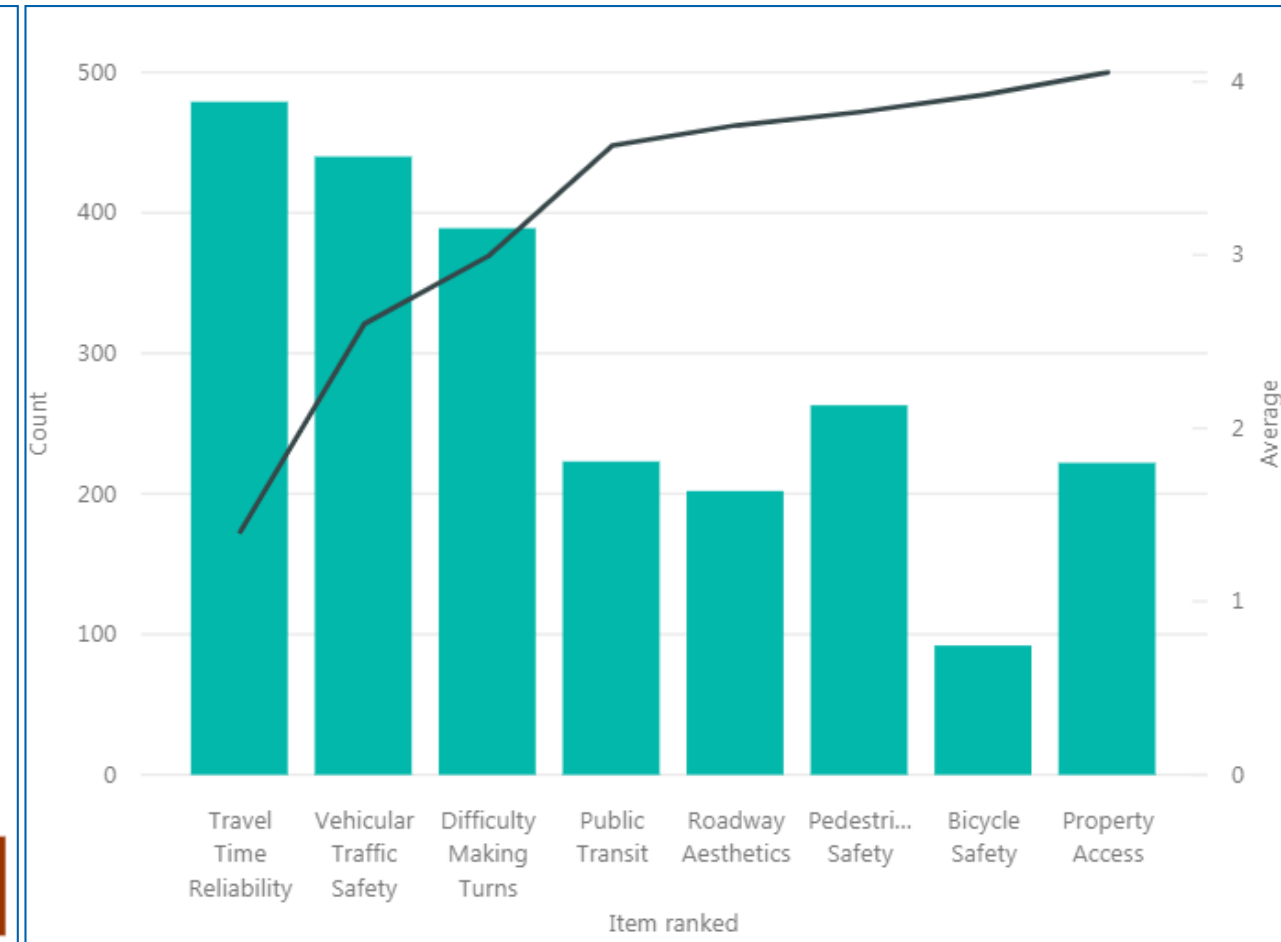
Home Zip Code



Work Zip Code



Centreville Road (Route 28) STARS Safety and Operational Improvements Study Online Survey Results Summary - Fall 2019

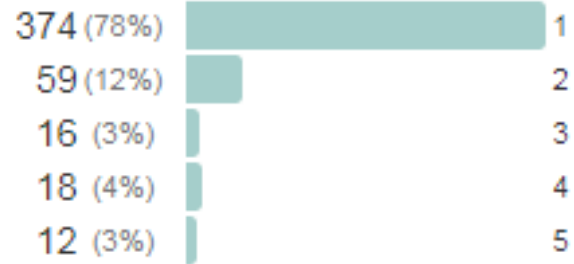


Note: The highest rank is 1, so small rankings and averages represent higher priorities than higher rankings and averages.

Centreville Road (Route 28) STARS Safety and Operational Improvements Study Online Survey Results Summary - Fall 2019

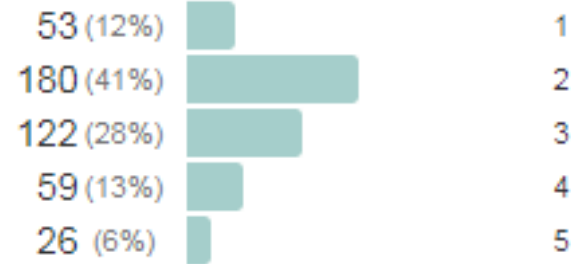


Travel Time Reliability



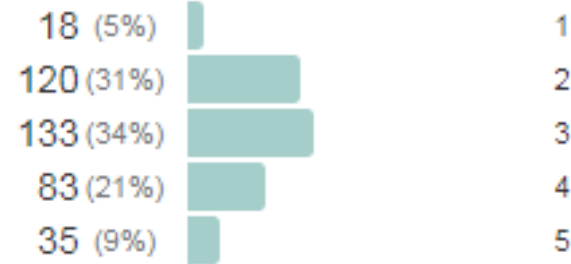
Times ranked: 479
Average rank: 1.403

Vehicular Traffic Safety



Times ranked: 440
Average rank: 2.602

Difficulty Making Turns



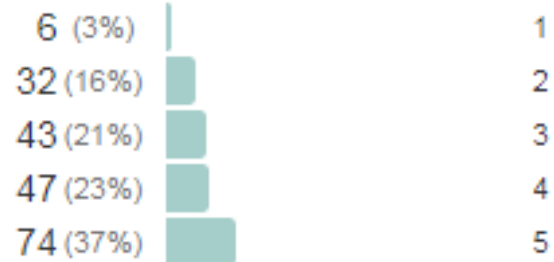
Times ranked: 389
Average rank: 2.992

Public Transit



Times ranked: 223
Average rank: 3.632

Roadway Aesthetics



Times ranked: 202
Average rank: 3.748

Pedestrian Safety



Times ranked: 263
Average rank: 3.825

Bicycle Safety



Times ranked: 92
Average rank: 3.924

Property Access



Times ranked: 222
Average rank: 4.054

Total Markers: 2,128
Marker attributes: 8,609
Comments: 714

Congestion

- Markers = 1,627; Comments = 434

Safety

- Markers = 248; Comments 131

Accessibility

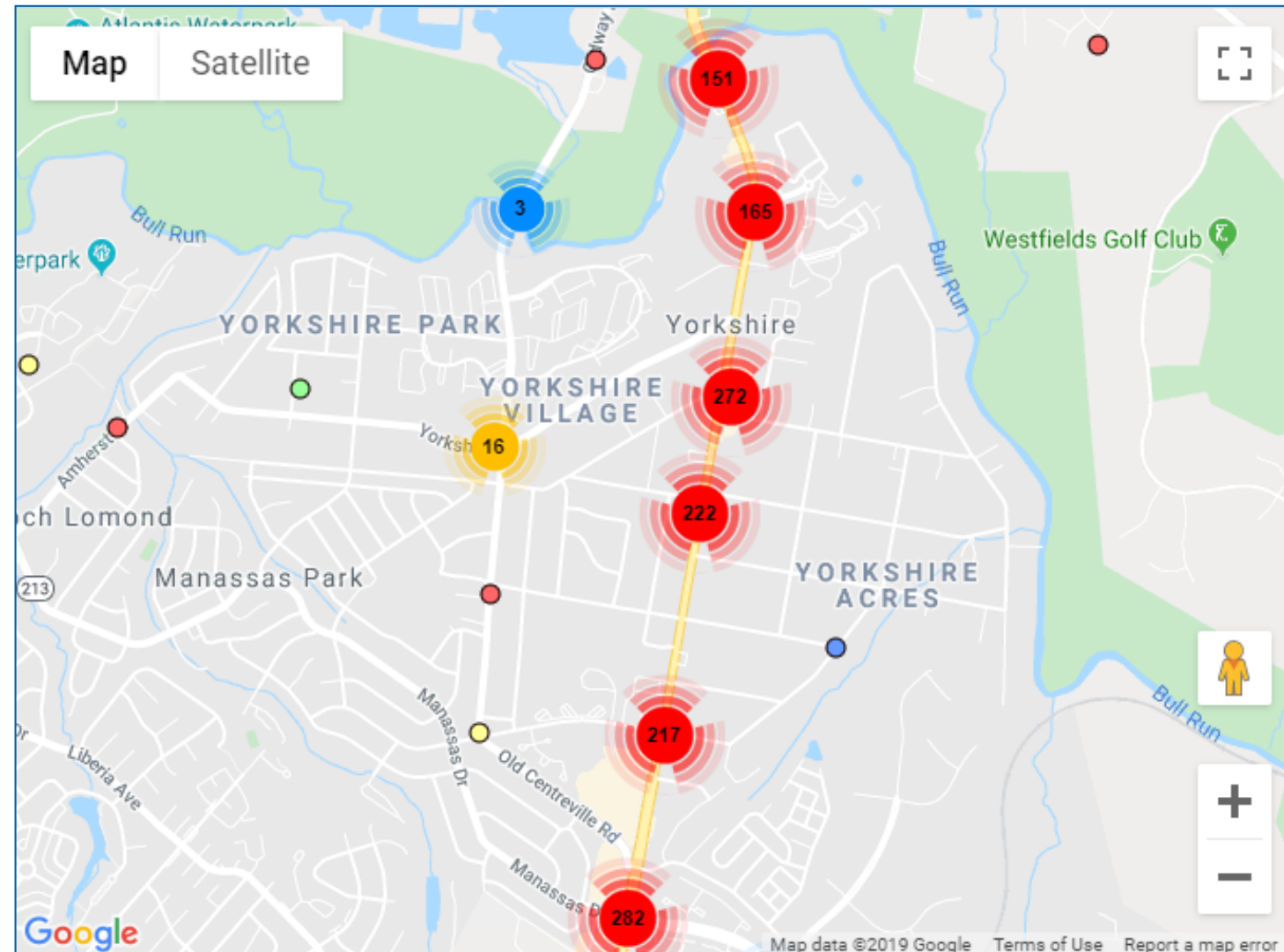
- Markers = 133; Comments: 63

Multimodal

- Markers = 43, Comments = 16

Other Issues

- Markers = 78, Comments = 70



Additional Information

www.virginiadot.org/projects/northernvirginia/centreville_rd_study.asp