

**APPENDIX A**  
NOISE METER AND ACOUSTICAL CALIBRATOR  
CALIBRATION CERTIFICATES





Meter #2

# Scantek, Inc.

CALIBRATION LABORATORY

ISO 17025: 2005, ANSI/NCSL Z540:1994 Part 1  
ACCREDITED by NVLAP (an ILAC MRA signatory)



NVLAP Lab Code: 200625-0

## Calibration Certificate No.36909

Instrument: **Sound Level Meter**  
 Model: **NL42**  
 Manufacturer: **Rion**  
 Serial number: **01222875**  
 Tested with: **Microphone UC52 s/n 144499**  
**Preamplifier NH24 s/n 22922**  
 Type (class): **2**  
 ID number: **017997**  
 Customer: **McCormick Taylor, Inc.**  
 Tel/Fax: **717-540-6040 / -6049**

Date Calibrated: **9/1/2016** Cal Due:  
 Status: 

Received	Sent
X	X

  
 In tolerance: 

X	X
---	---

  
 Out of tolerance: 

--	--

  
 See comments:  
 Contains non-accredited tests:  Yes  No  
 Calibration service:  Basic  Standard

Address: **5 Capital Drive, Suite 400,  
Harrisburg, PA 17110**

Tested in accordance with the following procedures and standards:  
Calibration of Sound Level Meters, Scantek Inc., Rev. 6/22/2012  
SLM & Dosimeters – Acoustical Tests, Scantek Inc., Rev. 7/6/2011

Instrumentation used for calibration: Nor-1504 Norsonic Test System:

Instrument - Manufacturer	Description	S/N	Cal. Date	Traceability evidence	Cal. Due
				Cal. Lab / Accreditation	
483B-Norsonic	SME Cal Unit	31061	Jul 27, 2016	Scantek, Inc./ NVLAP	Jul 27, 2017
DS-360-SRS	Function Generator	88077	Sep 9, 2014	ACR Env./ A2LA	Sep 9, 2016
34401A-Agilent Technologies	Digital Voltmeter	MY47011118	Sep 24, 2015	ACR Env./ A2LA	Sep 24, 2016
HM30-Thommen	Meteo Station	1040170/39633	Oct 23, 2015	ACR Env./ A2LA	Oct 23, 2016
PC Program 1019 Norsonic	Calibration software	v.6.1T	Validated Nov 2014	Scantek, Inc.	-
1251-Norsonic	Calibrator	30878	Nov 10, 2015	Scantek, Inc./ NVLAP	Nov 10, 2016
4226-Brüel&Kjær	Multifunction calibrator	2305103	Jul 25, 2016	Scantek, Inc./ NVLAP	Jul 25, 2017

Instrumentation and test results are traceable to SI (International System of Units) through standards maintained by NIST (USA) and NPL (UK).

### Environmental conditions:

Temperature (°C)	Barometric pressure (kPa)	Relative Humidity (%)
21.8	99.62	58.2

Calibrated by:	Jeremy Gotwalt	Authorized signatory:	Valentin Buzduga
Signature		Signature	
Date	9/1/16	Date	9/04/2016

Calibration Certificates or Test Reports shall not be reproduced, except in full, without written approval of the laboratory.  
 This Calibration Certificate or Test Reports shall not be used to claim product certification, approval or endorsement by NVLAP, NIST, or any agency of the federal government.  
 Document stored Z:\Calibration Lab\SLM 2016\RIONL42\_01222875\_M1.doc Page 1 of 2



Meter # 3

**Scantek, Inc.**

CALIBRATION LABORATORY

ISO 17025: 2005, ANSI/NCSL Z540:1994 Part 1  
ACCREDITED by NVLAP (an ILAC MRA signatory)



NVLAP Lab Code: 200625-0

# Calibration Certificate No.36910

**Instrument:** Sound Level Meter  
**Model:** NL42  
**Manufacturer:** Rion  
**Serial number:** 01222874  
**Tested with:** Microphone UC52 s/n 144498  
 Preamplifier NH24 s/n 22921  
**Type (class):** 2  
**Customer:** McCormick Taylor, Inc.  
**Tel/Fax:** 717-540-6040 / -6049

**Date Calibrated:** 9/1/2016 **Cal Due:**  
**Status:**

Received	Sent
X	X

**In tolerance:**  
**Out of tolerance:**  
**See comments:**  
**Contains non-accredited tests:**  Yes  No  
**Calibration service:**  Basic  Standard  
**Address:** 5 Capital Drive, Suite 400  
 Harrisburg, PA 17110

**Tested in accordance with the following procedures and standards:**  
 Calibration of Sound Level Meters, Scantek Inc., Rev. 6/22/2012  
 SLM & Dosimeters – Acoustical Tests, Scantek Inc., Rev. 7/6/2011

**Instrumentation used for calibration:** Nor-1504 Norsonic Test System:

Instrument - Manufacturer	Description	S/N	Cal. Date	Traceability evidence	Cal. Due
				Cal. Lab / Accreditation	
483B-Norsonic	SME Cal Unit	31061	Jul 27, 2016	Scantek, Inc./ NVLAP	Jul 27, 2017
DS-360-SRS	Function Generator	88077	Sep 9, 2014	ACR Env./ A2LA	Sep 9, 2016
34401A-Agilent Technologies	Digital Voltmeter	MY47011118	Sep 24, 2015	ACR Env./ A2LA	Sep 24, 2016
HM30-Thommen	Meteo Station	1040170/39633	Oct 23, 2015	ACR Env./ A2LA	Oct 23, 2016
PC Program 1019 Norsonic	Calibration software	v.6.1T	Validated Nov 2014	Scantek, Inc.	-
1251-Norsonic	Calibrator	30878	Nov 10, 2015	Scantek, Inc./ NVLAP	Nov 10, 2016
4226-Brüel&Kjær	Multifunction calibrator	2305103	Jul 25, 2016	Scantek, Inc./ NVLAP	Jul 25, 2017

**Instrumentation and test results are traceable to SI (International System of Units) through standards maintained by NIST (USA) and NPL (UK).**

**Environmental conditions:**

Temperature (°C)	Barometric pressure (kPa)	Relative Humidity (%)
22.0	99.61	58.5

<b>Calibrated by:</b>	Jeremy Gotwalt	<b>Authorized signatory:</b>	Valentin Buzduga
Signature		Signature	
Date	9/2/16	Date	9/04/2016

Calibration Certificates or Test Reports shall not be reproduced, except in full, without written approval of the laboratory.  
 This Calibration Certificate or Test Reports shall not be used to claim product certification, approval or endorsement by NVLAP, NIST, or any agency of the federal government.  
 Document stored Z:\Calibration Lab\SLM 2016\RIONL42\_01222874\_M1.doc Page 1 of 2



Meter # 4

# Scantek, Inc.

CALIBRATION LABORATORY

ISO 17025: 2005, ANSI/NCSL Z540:1994 Part 1  
ACCREDITED by NVLAP (an ILAC MRA signatory)



NVLAP Lab Code: 200625-0

## Calibration Certificate No.36911

Instrument: **Sound Level Meter**  
 Model: **NL42**  
 Manufacturer: **Rion**  
 Serial number: **01222873**  
 Tested with: **Microphone UC52 s/n 144497**  
**Preamplifier NH24 s/n 22920**  
 Type (class): **2**  
 Customer: **McCormick Taylor, Inc.**  
 Tel/Fax: **717-540-6040 / -6049**

Date Calibrated: **9/2/2016** Cal Due:  
 Status: 

Received	Sent
X	X

  
 In tolerance: 

X	X
---	---

  
 Out of tolerance: 

--	--

  
 See comments:  
 Contains non-accredited tests:  Yes  No  
 Calibration service:  Basic  Standard  
 Address: **5 Capital Drive, Suite 400**  
**Harrisburg, PA 17110**

Tested in accordance with the following procedures and standards:  
 Calibration of Sound Level Meters, Scantek Inc., Rev. 6/22/2012  
 SLM & Dosimeters – Acoustical Tests, Scantek Inc., Rev. 7/6/2011

Instrumentation used for calibration: Nor-1504 Norsonic Test System:

Instrument - Manufacturer	Description	S/N	Cal. Date	Traceability evidence	Cal. Due
				Cal. Lab / Accreditation	
483B-Norsonic	SME Cal Unit	31061	Jul 27, 2016	Scantek, Inc./ NVLAP	Jul 27, 2017
DS-360-SRS	Function Generator	88077	Sep 9, 2014	ACR Env./ A2LA	Sep 9, 2016
34401A-Agilent Technologies	Digital Voltmeter	MY47011118	Sep 24, 2015	ACR Env./ A2LA	Sep 24, 2016
HM30-Thommen	Meteo Station	1040170/39633	Oct 23, 2015	ACR Env./ A2LA	Oct 23, 2016
PC Program 1019 Norsonic	Calibration software	v.6.1T	Validated Nov 2014	Scantek, Inc.	-
1251-Norsonic	Calibrator	30878	Nov 10, 2015	Scantek, Inc./ NVLAP	Nov 10, 2016
4226-Brüel&Kjær	Multifunction calibrator	2305103	Jul 25, 2016	Scantek, Inc./ NVLAP	Jul 25, 2017

Instrumentation and test results are traceable to SI (International System of Units) through standards maintained by NIST (USA) and NPL (UK).

Environmental conditions:

Temperature (°C)	Barometric pressure (kPa)	Relative Humidity (%)
23.5	100.39	59.0

Calibrated by:	Jeremy Gotwalt	Authorized signatory:	Valentin Buduga
Signature		Signature	
Date	9/2/16	Date	9/04/2016

Calibration Certificates or Test Reports shall not be reproduced, except in full, without written approval of the laboratory.  
 This Calibration Certificate or Test Reports shall not be used to claim product certification, approval or endorsement by NVLAP, NIST,  
 or any agency of the federal government.

Document stored Z:\Calibration Lab\SLM 2016\RIONL42\_01222873\_M1.doc



Meter # 5

# Scantek, Inc.

CALIBRATION LABORATORY

ISO 17025: 2005, ANSI/NCSL Z540:1994 Part 1  
ACCREDITED by NVLAP (an ILAC MRA signatory)



NVLAP Lab Code: 200625-0

## Calibration Certificate No.36912

**Instrument:** Sound Level Meter  
**Model:** NL42  
**Manufacturer:** Rion  
**Serial number:** 01222891  
**Tested with:** Microphone UC52 s/n 144515  
Preamplifier NH24 s/n 22938  
**Type (class):** 2  
**ID number:** 017996  
**Customer:** McCormick Taylor, Inc.  
**Tel/Fax:** 717-540-6040/ -6049

**Date Calibrated:** 9/2/2016 **Cal Due:**  
**Status:**

Received	Sent
X	X

  
**In tolerance:**

X	X
---	---

  
**Out of tolerance:**

--	--

  
**See comments:**  
**Contains non-accredited tests:** \_\_\_ Yes X No  
**Calibration service:** \_\_\_ Basic X Standard

**Address:** 5 Capital Drive, Suite 400  
Harrisburg, PA 17110

**Tested in accordance with the following procedures and standards:**  
Calibration of Sound Level Meters, Scantek Inc., Rev. 6/22/2012  
SLM & Dosimeters – Acoustical Tests, Scantek Inc., Rev. 7/6/2011

**Instrumentation used for calibration:** Nor-1504 Norsonic Test System:

Instrument - Manufacturer	Description	S/N	Cal. Date	Traceability evidence	Cal. Due
				Cal. Lab / Accreditation	
483B-Norsonic	SME Cal Unit	31061	Jul 27, 2016	Scantek, Inc./ NVLAP	Jul 27, 2017
DS-360-SRS	Function Generator	88077	Sep 9, 2014	ACR Env./ A2LA	Sep 9, 2016
34401A-Agilent Technologies	Digital Voltmeter	MY47011118	Sep 24, 2015	ACR Env./ A2LA	Sep 24, 2016
HM30-Thommen	Meteo Station	1040170/39633	Oct 23, 2015	ACR Env./ A2LA	Oct 23, 2016
PC Program 1019 Norsonic	Calibration software	v.6.1T	Validated Nov 2014	Scantek, Inc.	-
1251-Norsonic	Calibrator	30878	Nov 10, 2015	Scantek, Inc./ NVLAP	Nov 10, 2016
4226-Brüel&Kjær	Multifunction calibrator	2305103	Jul 25, 2016	Scantek, Inc./ NVLAP	Jul 25, 2017

**Instrumentation and test results are traceable to SI (International System of Units) through standards maintained by NIST (USA) and NPL (UK).**

**Environmental conditions:**

Temperature (°C)	Barometric pressure (kPa)	Relative Humidity (%)
22.3	100.46	55.3

Calibrated by:	Jeremy Gotwalt	Authorized signatory:	Valentin Buzdaga
Signature		Signature	
Date	9/12/16	Date	9/10/2016

Calibration Certificates or Test Reports shall not be reproduced, except in full, without written approval of the laboratory.  
This Calibration Certificate or Test Reports shall not be used to claim product certification, approval or endorsement by NVLAP, NIST, or any agency of the federal government.



Meter 7

**Scantek, Inc.**

CALIBRATION LABORATORY

ISO 17025: 2005, ANSI/NCSL Z540:1994 Part 1  
ACCREDITED by NVLAP (an ILAC MRA signatory)



NVLAP Lab Code: 200625-0

# Calibration Certificate No.36915

Instrument: **Sound Level Meter**  
 Model: **NL42**  
 Manufacturer: **Rion**  
 Serial number: **00245571\_017998**  
 Tested with: **Microphone UC52 s/n 150894**  
**Preamplifier NH24 s/n 35571**  
 Type (class): **2**  
 Customer: **McCormick Taylor, Inc.**  
 Tel/Fax: **717-540-6040 / -6049**

Date Calibrated: **9/2/2016** Cal Due:  
 Status: 

Received	Sent
X	X

  
 In tolerance: 

--	--

  
 Out of tolerance: 

--	--

  
 See comments:  
 Contains non-accredited tests:  Yes  No  
 Calibration service:  Basic  Standard  
 Address: **5 Capital Drive, Suite 400,  
 Harrisburg, PA 17110**

Tested in accordance with the following procedures and standards:  
 Calibration of Sound Level Meters, Scantek Inc., Rev. 6/26/2015  
 SLM & Dosimeters – Acoustical Tests, Scantek Inc., Rev. 7/6/2011

Instrumentation used for calibration: Nor-1504 Norsonic Test System:

Instrument - Manufacturer	Description	S/N	Cal. Date	Traceability evidence	Cal. Due
				Cal. Lab / Accreditation	
483B-Norsonic	SME Cal Unit	31052	Oct 23, 2015	Scantek, Inc./ NVLAP	Oct 23, 2016
DS-360-SRS	Function Generator	33584	Oct 20, 2015	ACR Env./ A2LA	Oct 20, 2017
34401A-Agilent Technologies	Digital Voltmeter	US36120731	Oct 6, 2015	ACR Env. / A2LA	Oct 6, 2016
HM30-Thommen	Meteo Station	1040170/39633	Oct 23, 2015	ACR Env./ A2LA	Oct 23, 2016
PC Program 1019 Norsonic	Calibration software	v.6.1T	Validated Nov 2014	Scantek, Inc.	
1251-Norsonic	Calibrator	30878	Nov 10, 2015	Scantek, Inc./ NVLAP	Nov 10, 2016
4226-Brüel&Kjær	Multifunction calibrator	2305103	Jul 25, 2016	Scantek, Inc./ NVLAP	Jul 25, 2017

Instrumentation and test results are traceable to SI (International System of Units) through standards maintained by NIST (USA) and NPL (UK).

**Environmental conditions:**

Temperature (°C)	Barometric pressure (kPa)	Relative Humidity (%)
22.4	100.46	55.4

Calibrated by:	Lydon Dawkins	Authorized signatory:	Valentin Buzduga
Signature	<i>Lydon Dawkins</i>	Signature	<i>Valentin Buzduga</i>
Date	9/02/2016	Date	9/06/2016

Calibration Certificates or Test Reports shall not be reproduced, except in full, without written approval of the laboratory.  
 This Calibration Certificate or Test Reports shall not be used to claim product certification, approval or endorsement by NVLAP, NIST, or any agency of the federal government.  
 Document stored Z:\Calibration Lab\SLM 2016\RIONL42\_00245571\_017998\_M1.doc Page 1 of 2



Meter # 8

**Scantek, Inc.**

CALIBRATION LABORATORY

ISO 17025: 2005, ANSI/NCSL Z540:1994 Part 1  
ACCREDITED by NVLAP (an ILAC MRA signatory)



NVLAP Lab Code: 200625-0

# Calibration Certificate No.36916

Instrument: **Sound Level Meter**  
 Model: **NL42**  
 Manufacturer: **Rion**  
 Serial number: **00345929**  
 Tested with: **Microphone UC52 s/n 150747**  
**Preamplifier NH24 s/n 36127**  
 Type (class): **2**  
 Customer: **McCormick Taylor, Inc.**  
 Tel/Fax: **717-540-6040 / -6049**

Date Calibrated: **9/2/2016** Cal Due:  
 Status: 

Received	Sent
X	X

  
 In tolerance: 

X	X
---	---

  
 Out of tolerance: 

--	--

  
 See comments:  
 Contains non-accredited tests:    Yes X No  
 Calibration service:    Basic X Standard  
 Address: **5 Capital Drive, Suite 400,**  
**Harrisburg, PA 17110**

Tested in accordance with the following procedures and standards:  
 Calibration of Sound Level Meters, Scantek Inc., Rev. 6/26/2015  
 SLM & Dosimeters – Acoustical Tests, Scantek Inc., Rev. 7/6/2011

Instrumentation used for calibration: Nor-1504 Norsonic Test System:

Instrument - Manufacturer	Description	S/N	Cal. Date	Traceability evidence	Cal. Due
				Cal. Lab / Accreditation	
483B-Norsonic	SME Cal Unit	31052	Oct 23, 2015	Scantek, Inc./ NVLAP	Oct 23, 2016
DS-360-SRS	Function Generator	33584	Oct 20, 2015	ACR Env./ A2LA	Oct 20, 2017
34401A-Agilent Technologies	Digital Voltmeter	US36120731	Oct 6, 2015	ACR Env. / A2LA	Oct 6, 2016
HM30-Thommen	Meteo Station	1040170/39633	Oct 23, 2015	ACR Env./ A2LA	Oct 23, 2016
PC Program 1019 Norsonic	Calibration software	v.6.1T	Validated Nov 2014	Scantek, Inc.	-
1251-Norsonic	Calibrator	30878	Nov 10, 2015	Scantek, Inc./ NVLAP	Nov 10, 2016
4226-Brüel&Kjær	Multifunction calibrator	2305103	Jul 25, 2016	Scantek, Inc./ NVLAP	Jul 25, 2017

Instrumentation and test results are traceable to SI (International System of Units) through standards maintained by NIST (USA) and NPL (UK).

Environmental conditions:

Temperature (°C)	Barometric pressure (kPa)	Relative Humidity (%)
21.9	100.43	55.7

Calibrated by:	Lydon Dawkins	Authorized signatory:	Valentin Buzduga
Signature	<i>Lydon Dawkins</i>	Signature	<i>Valentin Buzduga</i>
Date	9/02/2016	Date	9/06/2016

Calibration Certificates or Test Reports shall not be reproduced, except in full, without written approval of the laboratory.  
 This Calibration Certificate or Test Reports shall not be used to claim product certification, approval or endorsement by NVLAP, NIST, or any agency of the federal government.  
 Document stored Z:\Calibration Lab\SLM 2016\RIONL42\_00345929\_M1.doc Page 1 of 2



Meter # 10

**Scantek, Inc.**

CALIBRATION LABORATORY

ISO 17025: 2005, ANSI/NCSL Z540:1994 Part 1  
ACCREDITED by NVLAP (an ILAC MRA signatory)

**NVLAP**<sup>®</sup>

NVLAP Lab Code: 200625-0

## Calibration Certificate No.36918

**Instrument:** Sound Level Meter  
**Model:** NL42  
**Manufacturer:** Rion  
**Serial number:** 00145385\_017999  
**Tested with:** Microphone UC52 s/n 148955  
 Preamplifier NH24 s/n 35281  
**Type (class):** 2  
**Customer:** McCormick Taylor, Inc.  
**Tel/Fax:** 717-540-6040 / -6049

**Date Calibrated:** 9/6/2016 **Cal Due:**  
**Status:**

Received	Sent
X	X

**In tolerance:**  
**Out of tolerance:**  
**See comments:**  
**Contains non-accredited tests:** \_\_\_ Yes X No  
**Calibration service:** \_\_\_ Basic X Standard  
**Address:** 5 Capital Drive, Suite 400,  
 Harrisburg, PA 17110

**Tested in accordance with the following procedures and standards:**  
 Calibration of Sound Level Meters, Scantek Inc., Rev. 6/26/2015  
 SLM & Dosimeters – Acoustical Tests, Scantek Inc., Rev. 7/6/2011

**Instrumentation used for calibration:** Nor-1504 Norsonic Test System:

Instrument - Manufacturer	Description	S/N	Cal. Date	Traceability evidence	Cal. Due
				Cal. Lab / Accreditation	
483B-Norsonic	SME Cal Unit	31052	Oct 23, 2015	Scantek, Inc./ NVLAP	Oct 23, 2016
DS-360-SRS	Function Generator	33584	Oct 20, 2015	ACR Env./ A2LA	Oct 20, 2017
34401A-Agilent Technologies	Digital Voltmeter	US36120731	Oct 6, 2015	ACR Env./ A2LA	Oct 6, 2016
HM30-Thommen	Meteo Station	1040170/39633	Oct 23, 2015	ACR Env./ A2LA	Oct 23, 2016
PC Program 1019 Norsonic	Calibration software	v.6.1T	Validated Nov 2014	Scantek, Inc.	-
1251-Norsonic	Calibrator	30878	Nov 10, 2015	Scantek, Inc./ NVLAP	Nov 10, 2016
4226-Brüel&Kjær	Multifunction calibrator	2305103	Jul 25, 2016	Scantek, Inc./ NVLAP	Jul 25, 2017

**Instrumentation and test results are traceable to SI (International System of Units) through standards maintained by NIST (USA) and NPL (UK).**

**Environmental conditions:**

Temperature (°C)	Barometric pressure (kPa)	Relative Humidity (%)
22.4	100.36	54.8

<b>Calibrated by:</b>	Lydon Dawkins	<b>Authorized signatory:</b>	Valentin Buzdaga
Signature	<i>Lydon Dawkins</i>	Signature	<i>Valentin Buzdaga</i>
Date	9/06/2016	Date	9/06/2016

Calibration Certificates or Test Reports shall not be reproduced, except in full, without written approval of the laboratory.  
 This Calibration Certificate or Test Reports shall not be used to claim product certification, approval or endorsement by NVLAP, NIST,  
 or any agency of the federal government.

Document stored Z:\Calibration Lab\SLM 2016\RIONL42\_00145385\_017999\_M1.doc



# Scantek, Inc.

CALIBRATION LABORATORY

ISO 17025: 2005, ANSI/NCSL Z540:1994 Part 1  
ACCREDITED by NVLAP (an ILAC MRA signatory)



NVLAP Lab Code: 200625-0

## Calibration Certificate No.36907

**Instrument:** Acoustical Calibrator  
**Model:** NC-74  
**Manufacturer:** Rion  
**Serial number:** 35236431  
**Class (IEC 60942):** 1  
**Barometer type:**  
**Barometer s/n:**

**Date Calibrated:** 8/31/2016 **Cal Due:**  
**Status:**

Received	Sent
X	X

  
**In tolerance:**  
**Out of tolerance:**  
**See comments:**  
**Contains non-accredited tests:**    Yes    No

**Customer:** McCormick Taylor, Inc.  
**Tel/Fax:** 717-540-6040 / -6049

**Address:** 5 Capital Drive, Suite 400  
Harrisburg, PA 17110

**Tested in accordance with the following procedures and standards:**

Calibration of Acoustical Calibrators, Scantek Inc., Rev. 10/1/2010

**Instrumentation used for calibration:** Nor-1504 Norsonic Test System:

Instrument - Manufacturer	Description	S/N	Cal. Date	Traceability evidence	Cal. Due
				Cal. Lab / Accreditation	
483B-Norsonic	SME Cal Unit	31061	Jul 27, 2016	Scantek, Inc./ NVLAP	Jul 27, 2017
DS-360-SRS	Function Generator	88077	Sep 9, 2014	ACR Env./ A2LA	Sep 9, 2016
34401A-Agilent Technologies	Digital Voltmeter	MY47011118	Sep 24, 2015	ACR Env./ A2LA	Sep 24, 2016
HM30-Thommen	Meteo Station	1040170/39633	Oct 23, 2015	ACR Env./ A2LA	Oct 23, 2016
140-Norsonic	Real Time Analyzer	1403978	Mar 17, 2016	Scantek, Inc. / NVLAP	Mar 17, 2017
PC Program 1018 Norsonic	Calibration software	v.6.1T	Validated Nov 2014	Scantek, Inc.	-
4192-Brüel&Kjær	Microphone	2854675	Nov 11, 2015	Scantek, Inc. / NVLAP	Nov 11, 2016
1203-Norsonic	Preamplifier	92268	Oct 14, 2015	Scantek, Inc./ NVLAP	Oct 14, 2016

**Instrumentation and test results are traceable to SI (International System of Units) through standards maintained by NIST (USA) and NPL (UK)**

<b>Calibrated by:</b>	Jeremy Gotwalt	<b>Authorized signatory:</b>	Valentin Buzduga
Signature		Signature	
Date	9/1/16	Date	9/04/2016

Calibration Certificates or Test Reports shall not be reproduced, except in full, without written approval of the laboratory. This Calibration Certificate or Test Reports shall not be used to claim product certification, approval or endorsement by NVLAP, NIST, or any agency of the federal government.  
Document stored as: Z:\Calibration Lab\Cal 2016\RIONNC74-0.5in\_35236431\_M1.doc



# Scantek, Inc.

CALIBRATION LABORATORY

ISO 17025: 2005, ANSI/NCSL Z540:1994 Part 1  
ACCREDITED by NVLAP (an ILAC MRA signatory)



NVLAP Lab Code: 200625-0

## Calibration Certificate No.36913

**Instrument:** Acoustical Calibrator  
**Model:** NC-74  
**Manufacturer:** Rion  
**Serial number:** 35125820\_018000  
**Class (IEC 60942):** 1  
**Barometer type:**  
**Barometer s/n:**  
**Customer:** McCormick Taylor, Inc.  
**Tel/Fax:** 717-540-6040 / -6049

**Date Calibrated:** 9/1/2016 **Cal Due:**  
**Status:**

Received	Sent
X	X

  
**In tolerance:**

X	X
---	---

  
**Out of tolerance:**

--	--

  
**See comments:**

--	--

  
**Contains non-accredited tests:**  Yes  No

**Address:** 5 Capital Drive, Suite 400,  
Harrisburg, PA 17110

### Tested in accordance with the following procedures and standards:

Calibration of Acoustical Calibrators, Scantek Inc., Rev. 1/16/2015

### Instrumentation used for calibration: Nor-1504 Norsonic Test System:

Instrument - Manufacturer	Description	S/N	Cal. Date	Traceability evidence	Cal. Due
				Cal. Lab / Accreditation	
483B-Norsonic	SME Cal Unit	31052	Oct 23, 2015	Scantek, Inc./ NVLAP	Oct 23, 2016
DS-360-SRS	Function Generator	33584	Oct 20, 2015	ACR Env./ A2LA	Oct 20, 2017
34401A-Agilent Technologies	Digital Voltmeter	US36120731	Oct 6, 2015	ACR Env. / A2LA	Oct 6, 2016
HM30-Thommen	Meteo Station	1040170/39633	Oct 23, 2015	ACR Env./ A2LA	Oct 23, 2016
140-Norsonic	Real Time Analyzer	1406424	Oct 26, 2015	Scantek / NVLAP	Oct 26, 2016
PC Program 1018 Norsonic	Calibration software	v.6.1T	Validated Nov 2014	Scantek, Inc.	-
4134-Brüel&Kjær	Microphone	173368	Nov 10, 2015	Scantek, Inc. / NVLAP	Nov 10, 2016
1203-Norsonic	Preamplifier	14052	Aug 24, 2016	Scantek, Inc./ NVLAP	Aug 24, 2017

Instrumentation and test results are traceable to SI (International System of Units) through standards maintained by NIST (USA) and NPL (UK)

<b>Calibrated by:</b>	Lydon Dawkins	<b>Authorized signatory:</b>	Valentin Buzduga
Signature	<i>Lydon Dawkins</i>	Signature	<i>Valentin Buzduga</i>
Date	9/01/2016	Date	9/06/2016

Calibration Certificates or Test Reports shall not be reproduced, except in full, without written approval of the laboratory. This Calibration Certificate or Test Reports shall not be used to claim product certification, approval or endorsement by NVLAP, NIST, or any agency of the federal government.  
Document stored as: Z:\Calibration Lab\Cal 2016\RIONNC74-0.5in\_35125820\_018000\_M1.doc Page 1 of 2



**APPENDIX B**  
NOISE MONITORING DATA FORMS



# Fairfax County Parkway Widening

Site #     M01    

Description :

5962 Coopers Landing Ct

Done By:     EJA    

Meter:     →    

Monitoring Data:

Date

Start Time

End Time

Duration

Leq.

    #3    

    SN: 6090    

    Run 8    

    AM Peak    

    2/20/2018    

    2:23 PM    

    2:38 PM    

    15 MIN    

    59.1    

    Off-Peak    

    PM Peak    

**Atmospheric Data**

    Wind Speed      
    (mph)    

    10    

    Temp. (°F)    

    70    

    Humidity (%)    

    50    

Traffic Data

Roadway

    Fairfax    

Direction

    NB    

    SB    

Traffic Total:

    347    

    354    

    0    

    0    

    0    

    0    

Cars

    333    

    339    

MT

    6    

    2    

HT

    8    

    13    

Weather Conditions

Site Data: Site Surface (alpha):            Shielding Factor :            Pavement Type :           



Plan View



NORTH



Monitoring Notes

AM Peak:     2:25-mail man    

Off-Peak:                     

PM Peak                     

Profile View:





# Fairfax County Parkway Widening

**Site #**     M02      
**Done By:**     AJN      
**Meter:**                      →

Description :

10804 Fournier Dr

**Monitoring Data:**

**Date**  
**Start Time**  
**End Time**  
**Duration**

#10	SN: 8007	Run 8
AM Peak	Off-Peak	PM Peak
2/20/18		
2:23 PM		
2:38 PM		
15 MIN	MIN	MIN
57.4		

**Atmospheric Data**

**Wind Speed (mph)**  
**Temp. (°F)**  
**Humidity (%)**

10  
 70  
 50

**Traffic Data**

**Roadway**  
**Direction**  
**Traffic Total:**  
**Cars**  
**MT**  
**HT**

Fairfax					
NB	SB				
347	354	0	0	0	0
333	339				
6	2				
8	13				

**Weather Conditions**

Site Data: Site Surface (alpha): \_\_\_\_\_ Shielding Factor : \_\_\_\_\_ Pavement Type : \_\_\_\_\_



**Plan View**



**NORTH**



**Monitoring Notes**

**AM Peak:** \_\_\_\_\_

**Off-Peak:** \_\_\_\_\_

**PM Peak** \_\_\_\_\_

**Profile View:**





# Fairfax County Parkway Widening

Site #     M03    

Description :

6122 Emmet Guards Ct

Done By:     DLH    

Meter:     →    

Monitoring Data:

	#8	SN: 8007	Run 7
AM Peak	Off-Peak	PM Peak	
Date	2/20/18		
Start Time	2:28 PM		
End Time	2:43 PM		
Duration	15 MIN	MIN	MIN
Leq.	<b>63.1</b>		

Atmospheric Data
Wind Speed (mph)
10
Temp. (°F)
70
Humidity (%)
50

Traffic Data

	Ox Rd					
Direction	NB	SB				
Traffic Total:	281	482	0	0	0	0
Cars	269	471				
MT	2	3				
HT	10	8				

Weather Conditions

Site Data: Site Surface (alpha):      Shielding Factor:      Pavement Type:     



Plan View



NORTH



Monitoring Notes

AM Peak: 2:30: Car passby

Off-Peak: \_\_\_\_\_

PM Peak \_\_\_\_\_

Profile View:





# Fairfax County Parkway Widening

Site # **M04**

Description :

Fairfax Station Swim & Tennis 6203 Old Arrington Ln

Done By: **DLH**

Meter:

Monitoring Data:

Date

Start Time

End Time

Duration

Leq.

Traffic Data

Roadway

Direction

Traffic Total:

Cars

MT

HT

Weather Conditions

Site Data: Site Surface (alpha): \_\_\_\_\_ Shielding Factor : \_\_\_\_\_ Pavement Type : \_\_\_\_\_

#8	SN: 8006	Run 6
AM Peak	Off-Peak	PM Peak
2/20/18		
1:50 PM		
2:05 PM		
15 MIN	MIN	MIN
<b>59.1</b>		
Fairfax		
NB   SB		
426	419	0   0
402	397	
9	7	
15	15	

Atmospheric Data
Wind Speed (mph)
10
Temp. (°F)
70
Humidity (%)
50



Plan View



NORTH



Monitoring Notes

AM Peak: 1:51 / 1:56 / 2:03 - loud vehicle passby

Off-Peak: \_\_\_\_\_

PM Peak \_\_\_\_\_

Profile View:













# Fairfax County Parkway Widening

Site #     M07      
 Done By:     AJN      
 Meter:     →    

Description :     11160 Deuaughn Ct    

Monitoring Data:  
 Date  
 Start Time  
 End Time  
 Duration  
 Leq.

#4	SN: 6095	Run 6
AM Peak	Off-Peak	PM Peak
2/20/18		
1:50 PM		
2:05 PM		
15 MIN	MIN	MIN
<b>62.7</b>		

Atmospheric Data
Wind Speed (mph)
10
Temp. (°F)
70
Humidity (%)
50

Traffic Data

Roadway	Fairfax					
Direction	NB	SB				
Traffic Total:	426	419	0	0	0	0
Cars	402	397				
MT	9	7				
HT	15	15				

Weather Conditions

Site Data: Site Surface (alpha):      Shielding Factor:      Pavement Type :     



Plan View



Monitoring Notes

AM Peak: \_\_\_\_\_

\_\_\_\_\_

\_\_\_\_\_

\_\_\_\_\_

\_\_\_\_\_

\_\_\_\_\_

\_\_\_\_\_

Off-Peak: \_\_\_\_\_

\_\_\_\_\_

\_\_\_\_\_

\_\_\_\_\_

\_\_\_\_\_

\_\_\_\_\_

\_\_\_\_\_

PM Peak \_\_\_\_\_

\_\_\_\_\_

\_\_\_\_\_

\_\_\_\_\_

\_\_\_\_\_

\_\_\_\_\_

Profile View:





# Fairfax County Parkway Widening

**Site #**     M08      
**Done By:**     DLH      
**Meter:**            →

Description :

6101 Housatonic Ct

**Monitoring Data:**

**Date**  
**Start Time**  
**End Time**  
**Duration**

#1	SN: 6081	Run 6
AM Peak	Off-Peak	PM Peak
2/20/18		
1:50 PM		
2:05 PM		
15 MIN	MIN	MIN
<b>60.9</b>		

**Atmospheric Data**

Wind Speed (mph)  
**10**  
Temp. (°F)  
**70**  
Humidity (%)  
**50**

**Traffic Data**

**Roadway**  
**Direction**  
**Traffic Total:**  
**Cars**  
**MT**  
**HT**

Fairfax					
NB	SB				
426	419	0	0	0	0
402	397				
9	7				
15	15				

**Weather Conditions**

Site Data: Site Surface (alpha):          Shielding Factor :          Pavement Type :         



**Plan View**



**NORTH**



**Monitoring Notes**

**AM Peak:** \_\_\_\_\_

\_\_\_\_\_

\_\_\_\_\_

\_\_\_\_\_

\_\_\_\_\_

**Off-Peak:** \_\_\_\_\_

\_\_\_\_\_

\_\_\_\_\_

\_\_\_\_\_

\_\_\_\_\_

**PM Peak** \_\_\_\_\_

\_\_\_\_\_

\_\_\_\_\_

\_\_\_\_\_

\_\_\_\_\_

**Profile View:**





# Fairfax County Parkway Widening

Site # **M09**

Description :

5937 Fairview Woods Dr

Done By: **EJA**

Meter: **→**

Monitoring Data:

#7	SN: 0502	Run
AM Peak	Off-Peak	PM Peak
Date 2/20/18		
Start Time 1:50 PM		
End Time 2:05 PM		
Duration 15 MIN	MIN	MIN
Leq. <b>66.8</b>		

**Atmospheric Data**

Wind Speed (mph) <b>10</b>
Temp. (°F) <b>70</b>
Humidity (%) <b>50</b>

Traffic Data

Roadway

Direction

Traffic Total:

Cars

MT

HT

Fairfax					
NB	SB	0	0	0	0
426	419				
402	397				
9	7				
15	15				

Weather Conditions

Site Data: Site Surface (alpha): \_\_\_\_\_ Shielding Factor : \_\_\_\_\_ Pavement Type : \_\_\_\_\_



Plan View



NORTH



Monitoring Notes

AM Peak: \_\_\_\_\_

Off-Peak: \_\_\_\_\_

PM Peak \_\_\_\_\_

Profile View:





# Fairfax County Parkway Widening

**Site #**     M10      
**Done By:**     EJA      
**Meter:**                      →

Description :

6000 Station View Ct

**Monitoring Data:**

	#3	SN: 6089	Run 6
AM Peak	Off-Peak	PM Peak	
Date	2/20/18		
Start Time	1:50 PM		
End Time	2:05 PM		
Duration	15 MIN	MIN	MIN
Leq.	<b>67.7</b>		

Atmospheric Data	
Wind Speed (mph)	10
Temp. (°F)	70
Humidity (%)	50

**Traffic Data**

Roadway	Fairfax					
Direction	NB	SB				
Traffic Total:	426	419	0	0	0	0
Cars	402	397				
MT	9	7				
HT	15	15				

**Weather Conditions**

Site Data: Site Surface (alpha): \_\_\_\_\_ Shielding Factor : \_\_\_\_\_ Pavement Type : \_\_\_\_\_



**Plan View**



Monitoring Notes

AM Peak: \_\_\_\_\_

\_\_\_\_\_

\_\_\_\_\_

\_\_\_\_\_

\_\_\_\_\_

\_\_\_\_\_

\_\_\_\_\_

Off-Peak: \_\_\_\_\_

\_\_\_\_\_

\_\_\_\_\_

\_\_\_\_\_

\_\_\_\_\_

\_\_\_\_\_

\_\_\_\_\_

PM Peak \_\_\_\_\_

\_\_\_\_\_

\_\_\_\_\_

\_\_\_\_\_

\_\_\_\_\_

\_\_\_\_\_

**Profile View:**





# Fairfax County Parkway Widening

Site #     M11    

Description :

5963 Fairview Woods Dr

Done By:     AJN    

Meter:                      →

Monitoring Data:

#5	SN: 8006	Run 5
AM Peak	Off-Peak	PM Peak
Date 2/27/18		
Start Time 10:35 AM		
End Time 10:50 AM		
Duration 15 MIN	MIN	MIN
Leq. <b>62.9</b>		

Atmospheric Data
Wind Speed (mph) <b>10</b>
Temp. (°F) <b>70</b>
Humidity (%) <b>50</b>

Traffic Data

Roadway	Fairfax					
Direction	NB	SB				
Traffic Total:	412	346	0	0	0	0
Cars	390	321				
MT	12	16				
HT	10	9				

Weather Conditions

Site Data: Site Surface (alpha):            Shielding Factor :            Pavement Type :           



Plan View



NORTH



Monitoring Notes

AM Peak: \_\_\_\_\_

\_\_\_\_\_

\_\_\_\_\_

\_\_\_\_\_

\_\_\_\_\_

Off-Peak: \_\_\_\_\_

\_\_\_\_\_

\_\_\_\_\_

\_\_\_\_\_

\_\_\_\_\_

PM Peak \_\_\_\_\_

\_\_\_\_\_

\_\_\_\_\_

\_\_\_\_\_

\_\_\_\_\_

Profile View:









# Fairfax County Parkway Widening

**Site #**     M13      
**Done By:**     AJN      
**Meter:**                      →

Description :

5736 Daingerfield Way

**Monitoring Data:**

**Date**  
**Start Time**  
**End Time**  
**Duration**

#10	SN: 8005	Run 5
AM Peak	Off-Peak	PM Peak
2/20/18		
12:23 PM		
12:38 PM		
15 MIN	MIN	MIN
<b>63.7</b>		

**Atmospheric Data**

**Wind Speed (mph)**  
**Temp. (°F)**  
**Humidity (%)**

10  
 70  
 50

**Traffic Data**

**Roadway**  
**Direction**  
**Traffic Total:**  
**Cars**  
**MT**  
**HT**

Fairfax at Pope		Pope		Fairfax at Burke	
NB	SB	EB	WB	SB	NB
421	383	4	3	359	366
405	350	4	3	327	352
11	14	0	0	13	9
5	19	0	0	19	5

**Weather Conditions**

Site Data: Site Surface (alpha):            Shielding Factor:            Pavement Type :           



**Plan View**



**NORTH**



**Monitoring Notes**

**AM Peak:** \_\_\_\_\_  
 \_\_\_\_\_  
 \_\_\_\_\_  
 \_\_\_\_\_  
 \_\_\_\_\_  
**Off-Peak:** \_\_\_\_\_  
 \_\_\_\_\_  
 \_\_\_\_\_  
 \_\_\_\_\_  
**PM Peak** \_\_\_\_\_  
 \_\_\_\_\_  
 \_\_\_\_\_  
 \_\_\_\_\_  
 \_\_\_\_\_

**Profile View:**





# Fairfax County Parkway Widening

**Site #**     M14      
**Done By:**     EJA      
**Meter:**                      →

Description :

5665 Nomes Court

**Monitoring Data:**

**Date**

**Start Time**

**End Time**

**Duration**

Leq.

**Traffic Data**

**Roadway**

**Direction**

**Traffic Total:**

**Cars**

**MT**

**HT**

**Weather Conditions**

Site Data: Site Surface (alpha): \_\_\_\_\_ Shielding Factor : \_\_\_\_\_ Pavement Type : \_\_\_\_\_

#7	SN: 0501	Run 5
AM Peak	Off-Peak	PM Peak
2/20/18		
12:23 PM		
12:38 PM		
15 MIN	MIN	MIN
<b>60.4</b>		
Fairfax at Pope	Pope	Fairfax at Burke
NB   SB	EB   WB	SB   NB
421   383	4   3	359   366
405   350	4   3	327   352
11   14	0   0	13   9
5   19	0   0	19   5

Atmospheric Data
Wind Speed (mph)
<b>10</b>
Temp. (°F)
<b>70</b>
Humidity (%)
<b>50</b>



**Plan View**



**NORTH**



**Monitoring Notes**

**AM Peak:** Air plane - 12:23 & 12:26

**Off-Peak:** \_\_\_\_\_

**PM Peak** \_\_\_\_\_

**Profile View:**





# Fairfax County Parkway Widening

**Site #**     M15      
**Done By:**     EJA      
**Meter:**                      →

Description :

5483 Ladues End Ln

**Monitoring Data:**

	#3	6888	Run 5
<b>AM Peak</b>	AM Peak	Off-Peak	PM Peak
<b>Date</b>	2/20/18		
<b>Start Time</b>	12:23 PM		
<b>End Time</b>	12:38 PM		
<b>Duration</b>	15 MIN	MIN	MIN
<b>Leq.</b>	<b>61.1</b>		

Atmospheric Data	
Wind Speed (mph)	10
Temp. (°F)	70
Humidity (%)	50

**Traffic Data**

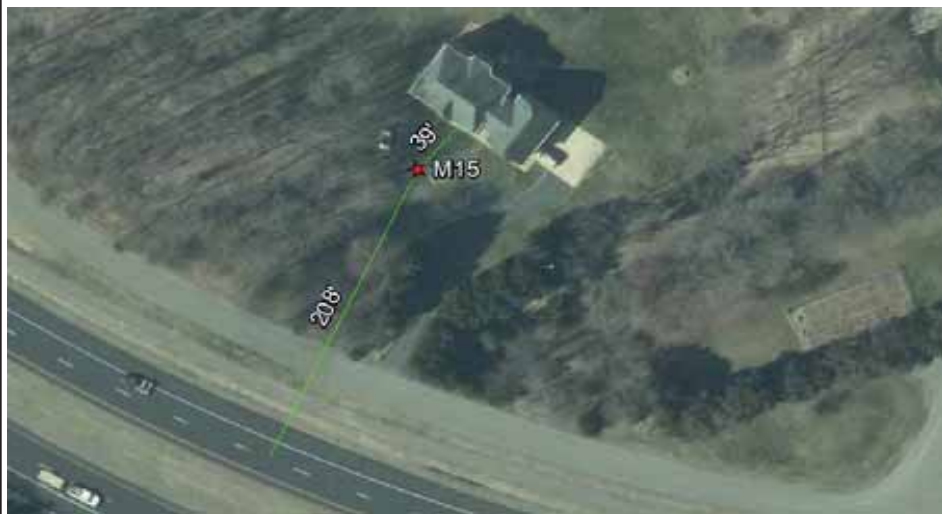
	Fairfax at Pope		Pope		Fairfax at Burke	
	NB	SB	EB	WB	SB	NB
<b>Direction</b>						
<b>Traffic Total:</b>	421	383	4	3	359	366
<b>Cars</b>	405	350	4	3	327	352
<b>MT</b>	11	14	0	0	13	9
<b>HT</b>	5	19	0	0	19	5

**Weather Conditions**

Site Data: Site Surface (alpha): \_\_\_\_\_ Shielding Factor : \_\_\_\_\_ Pavement Type : \_\_\_\_\_



**Plan View**



**NORTH**



**Monitoring Notes**

**AM Peak:** Air plane - 12:23 & 12:26  
Local traffic - 12:30

**Off-Peak:** \_\_\_\_\_

**PM Peak** \_\_\_\_\_

**Profile View:**





# Fairfax County Parkway Widening

**Site #**     M16      
**Done By:**     DLH      
**Meter:**                      →

Description :

11615 Popes Head Rd

**Monitoring Data:**

**Date**  
**Start Time**  
**End Time**  
**Duration**

#8	SN: 8005	Run 5
AM Peak	Off-Peak	PM Peak
2/20/18		
12:23 PM		
12:38 PM		
15 MIN	MIN	MIN

Leq.

<b>61.9</b>		
-------------	--	--

**Atmospheric Data**

Wind Speed (mph)

10

Temp. (°F)

70

Humidity (%)

50

**Traffic Data**

**Roadway**  
**Direction**  
**Traffic Total:**  
**Cars**  
**MT**  
**HT**

Fairfax at Pope		Pope		Fairfax at Burke	
NB	SB	EB	WB	SB	NB
421	383	4	3	359	366
405	350	4	3	327	352
11	14	0	0	13	9
5	19	0	0	19	5

**Weather Conditions**

Site Data: Site Surface (alpha): \_\_\_\_\_ Shielding Factor : \_\_\_\_\_ Pavement Type : \_\_\_\_\_



**Plan View**



**NORTH**



**Monitoring Notes**

**AM Peak:** Air plane - 12:23 & 12:26

**Off-Peak:** \_\_\_\_\_

**PM Peak** \_\_\_\_\_

**Profile View:**





# Fairfax County Parkway Widening

Site #     M17    

Description :

11629 Popes Head Rd

Done By:     DLH    

Meter:                      →

**Monitoring Data:**

Date

Start Time

End Time

Duration

Leq.

    #2    

    SN: 6085    

    Run 5    

    AM Peak    

    2/27/18    

    11:15 AM    

    11:30 AM    

    15 MIN    

    58.9    

    Off-Peak    

    PM Peak    

**Atmospheric Data**

    Wind Speed      
(mph)

    10    

    Temp. (°F)    

    70    

    Humidity (%)    

    50    

**Traffic Data**

**Roadway**

    Fairfax    

**Direction**

    SB    NB    

**Traffic Total:**

    352    419    

**Cars**

    331    396    

**MT**

    12    5    

**HT**

    9    18    

**Weather Conditions**

Site Data: Site Surface (alpha):            Shielding Factor:            Pavement Type:           



**Plan View**



**NORTH**



**Monitoring Notes**

**AM Peak:** \_\_\_\_\_

**Off-Peak:** \_\_\_\_\_

**PM Peak:** \_\_\_\_\_

**Profile View:**





# Fairfax County Parkway Widening

Site #     M18    

Description :

5452 Maristone Ln

Done By:     DLH    

Meter:                      →

Monitoring Data:

	#8	SN: 8004	Run 4
<b>AM Peak</b>	Off-Peak	PM Peak	
<b>Date</b>	2/20/18		
<b>Start Time</b>	11:10 AM		
<b>End Time</b>	11:25 AM		
<b>Duration</b>	15 MIN	MIN	MIN
<b>Leq.</b>	<b>58.0</b>		

Atmospheric Data
<u>Wind Speed (mph)</u>
10
<u>Temp. (°F)</u>
70
<u>Humidity (%)</u>
50

Traffic Data

	Fairfax		Braddock			
<b>Roadway</b>						
<b>Direction</b>	NB	SB	WB	EB		
<b>Traffic Total:</b>	402	343	80	232	0	0
<b>Cars</b>	385	325	78	227		
<b>MT</b>	8	11	2	2		
<b>HT</b>	9	7	0	3		

Weather Conditions

Site Data: Site Surface (alpha):            Shielding Factor:            Pavement Type :           



Plan View



NORTH

Monitoring Notes

AM Peak: \_\_\_\_\_

\_\_\_\_\_

\_\_\_\_\_

\_\_\_\_\_

\_\_\_\_\_

\_\_\_\_\_

\_\_\_\_\_

Off-Peak: \_\_\_\_\_

\_\_\_\_\_

\_\_\_\_\_

\_\_\_\_\_

\_\_\_\_\_

\_\_\_\_\_

\_\_\_\_\_

PM Peak \_\_\_\_\_

\_\_\_\_\_

\_\_\_\_\_

\_\_\_\_\_

\_\_\_\_\_

\_\_\_\_\_

Profile View:







# Fairfax County Parkway Widening

Site #     M20      
 Done By:     AJN      
 Meter:     →    

Description :     Patriot Park 12111 Braddock Rd    

Monitoring Data:

#4	SN 6093	Run 4
AM Peak	Off-Peak	PM Peak
Date 2/20/18		
Start Time 11:10 AM		
End Time 11:25 AM		
Duration 15 MIN	MIN	MIN
Leq. <b>60.6</b>		

Atmospheric Data
Wind Speed (mph) <b>10</b>
Temp. (°F) <b>70</b>
Humidity (%) <b>50</b>

Traffic Data

	Fairfax		Braddock			
	NB	SB	WB	EB	0	0
<b>Direction</b>						
<b>Traffic Total:</b>	402	343	80	232		
<b>Cars</b>	385	325	78	227		
<b>MT</b>	8	11	2	2		
<b>HT</b>	9	7	0	3		



Weather Conditions

Site Data: Site Surface (alpha):      Shielding Factor :      Pavement Type :     

Plan View



Monitoring Notes

AM Peak: \_\_\_\_\_

\_\_\_\_\_

\_\_\_\_\_

\_\_\_\_\_

\_\_\_\_\_

\_\_\_\_\_

Off-Peak: \_\_\_\_\_

\_\_\_\_\_

\_\_\_\_\_

\_\_\_\_\_

\_\_\_\_\_

\_\_\_\_\_

PM Peak \_\_\_\_\_

\_\_\_\_\_

\_\_\_\_\_

\_\_\_\_\_

\_\_\_\_\_

Profile View:



# Fairfax County Parkway Widening

Site #     M21    

Description :

5417 Sasher Ln

Done By:     EJA    

Meter:     →    

Monitoring Data:

	#10	SN: 8004	Run 4
AM Peak	Off-Peak	PM Peak	
Date	2/20/18		
Start Time	11:10 AM		
End Time	11:25 AM		
Duration	15 MIN	MIN	MIN
Leq.	<b>62.0</b>		

**Atmospheric Data**

Wind Speed (mph)	10
Temp. (°F)	70
Humidity (%)	50

Traffic Data

Roadway

Fairfax		Braddock			
NB	SB	WB	EB		
402	343	80	232	0	0
Cars	385	325	78	227	
MT	8	11	2	2	
HT	9	7	0	3	

Weather Conditions

Site Data: Site Surface (alpha):      Shielding Factor:      Pavement Type:     



Plan View



NORTH

Monitoring Notes

**AM Peak:** Constuctiong vehicle backing up - 11:12  
Loud Hawk - 11:18.10

**Off-Peak:** \_\_\_\_\_

**PM Peak** \_\_\_\_\_

Profile View:











# Fairfax County Parkway Widening

Site #     M24    

Description :

12313 Cannonball Rd

Done By:     DLH    

Meter:                      →

Monitoring Data:

Date

Start Time

End Time

Duration

Leq.

Traffic Data

Roadway

Direction

Traffic Total:

Cars

MT

HT

Weather Conditions

Site Data: Site Surface (alpha):            Shielding Factor :            Pavement Type :           

#8	SN: 8003	Run 3
AM Peak	Off-Peak	PM Peak
2/20/18		
10:05 AM		
10:20 AM		
15 MIN	MIN	MIN
<b>68.9</b>		
Fairfax		
NB   SB		
Traffic Total:		
Cars		
MT		
HT		

Atmospheric Data
Wind Speed (mph)
10
Temp. (°F)
70
Humidity (%)
50



Plan View



NORTH



Monitoring Notes

AM Peak: \_\_\_\_\_

\_\_\_\_\_

\_\_\_\_\_

\_\_\_\_\_

\_\_\_\_\_

\_\_\_\_\_

\_\_\_\_\_

\_\_\_\_\_

Off-Peak: \_\_\_\_\_

\_\_\_\_\_

\_\_\_\_\_

\_\_\_\_\_

\_\_\_\_\_

\_\_\_\_\_

\_\_\_\_\_

\_\_\_\_\_

PM Peak \_\_\_\_\_

\_\_\_\_\_

\_\_\_\_\_

\_\_\_\_\_

\_\_\_\_\_

\_\_\_\_\_

Profile View:







# Fairfax County Parkway Widening

Site #     M26    

Description :

12755 Heron Ridge Dr

Done By:     EJA    

Meter:                      →

**Monitoring Data:**

Date

Start Time

End Time

Duration

Leq.

    #3    

    SN: 6087    

    Run 2    

AM Peak	Off-Peak	PM Peak
2/20/18		
9:21 AM		
9:36 AM		
15 MIN	MIN	MIN
<b>61.3</b>		

**Atmospheric Data**

Wind Speed (mph)

10

Temp. (°F)

70

Humidity (%)

50

**Traffic Data**

Roadway

Direction

Traffic Total:

Cars

MT

HT

Fairfax		29			
NB	SB	EB	WB		
708	488	338	77	0	0
681	460	329	75		
7	14	5	0		
20	14	4	2		

**Weather Conditions**

Site Data: Site Surface (alpha):            Shielding Factor :            Pavement Type :           



**Plan View**



**NORTH**



**Monitoring Notes**

**AM Peak:** In depression terrain.

**Off-Peak:** \_\_\_\_\_

**PM Peak:** \_\_\_\_\_

**Profile View:**



# Fairfax County Parkway Widening

Site #     M27    

Description :

12662 Heron Ridge Dr

Done By:     DLH    

Meter:                      →

Monitoring Data:

Date

Start Time

End Time

Duration

Leq.

#3

SN: 6086

Run 1

AM Peak

2/20/18

8:30 AM

8:45 AM

15 MIN

61.2

Off-Peak

MIN

PM Peak

MIN

**Atmospheric Data**

Wind Speed (mph)

10

Temp. (°F)

70

Humidity (%)

50

Traffic Data

Roadway

Fairfax

Direction

NB

SB

Traffic Total:

989

815

0

0

0

0

Cars

960

786

MT

17

15

HT

12

14

Weather Conditions

Site Data: Site Surface (alpha):           

Shielding Factor:           

Pavement Type:           



Plan View



NORTH



Monitoring Notes

AM Peak: \_\_\_\_\_

Off-Peak: \_\_\_\_\_

PM Peak: \_\_\_\_\_

Profile View:





# Fairfax County Parkway Widening

Site #     M28    

Description :

12525 Cerromar PI

Done By:     DLH    

Meter:     →    

Monitoring Data:

Date

Start Time

End Time

Duration

Leq.

#2

SN: 6082

Run 1

AM Peak

2/20/18

8:30 AM

8:45 AM

15 MIN

66.9

Off-Peak

MIN

PM Peak

MIN

**Atmospheric Data**

Wind Speed (mph)

10

Temp. (°F)

70

Humidity (%)

50

Traffic Data

Roadway

Fairfax

Direction

NB

SB

Traffic Total:

989

815

0

0

0

0

Cars

960

786

MT

17

15

HT

12

14

Weather Conditions

Site Data: Site Surface (alpha):      Shielding Factor:      Pavement Type:     



Plan View



NORTH



Monitoring Notes

AM Peak: \_\_\_\_\_

Off-Peak: \_\_\_\_\_

PM Peak: \_\_\_\_\_

Profile View:



# Fairfax County Parkway Widening

Site #     M29    

Description :

12552 Cerromar PI

Done By:     DLH    

Meter:     →    

Monitoring Data:

Date

Start Time

End Time

Duration

Leq.

Traffic Data

Roadway

Direction

Traffic Total:

Cars

MT

HT

Weather Conditions

Site Data: Site Surface (alpha):      Shielding Factor:      Pavement Type:     

#1	SN: 6079	Run 1
AM Peak	Off-Peak	PM Peak
2/20/18		
8:30 AM		
8:45 AM		
15 MIN	MIN	MIN
<b>64.9</b>		
Fairfax		
NB	SB	
989	815	0 0
960	786	
17	15	
12	14	

Atmospheric Data
Wind Speed (mph)
<b>10</b>
Temp. (°F)
<b>70</b>
Humidity (%)
<b>50</b>



Plan View



NORTH



Monitoring Notes

AM Peak: \_\_\_\_\_

Off-Peak: \_\_\_\_\_

PM Peak: \_\_\_\_\_

Profile View:

